



MONTHLY MEMBERSHIP PROGRESS REPORT

District 11 B2

Results as of: 09/30/2017

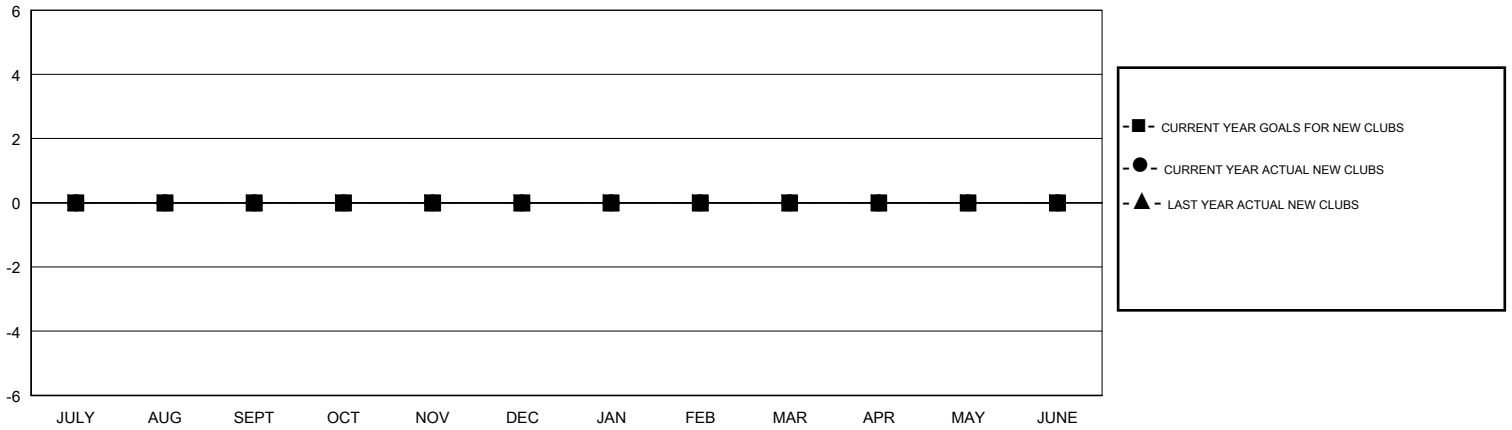
GMT: STEVE ANTON

LOCATION MICHIGAN

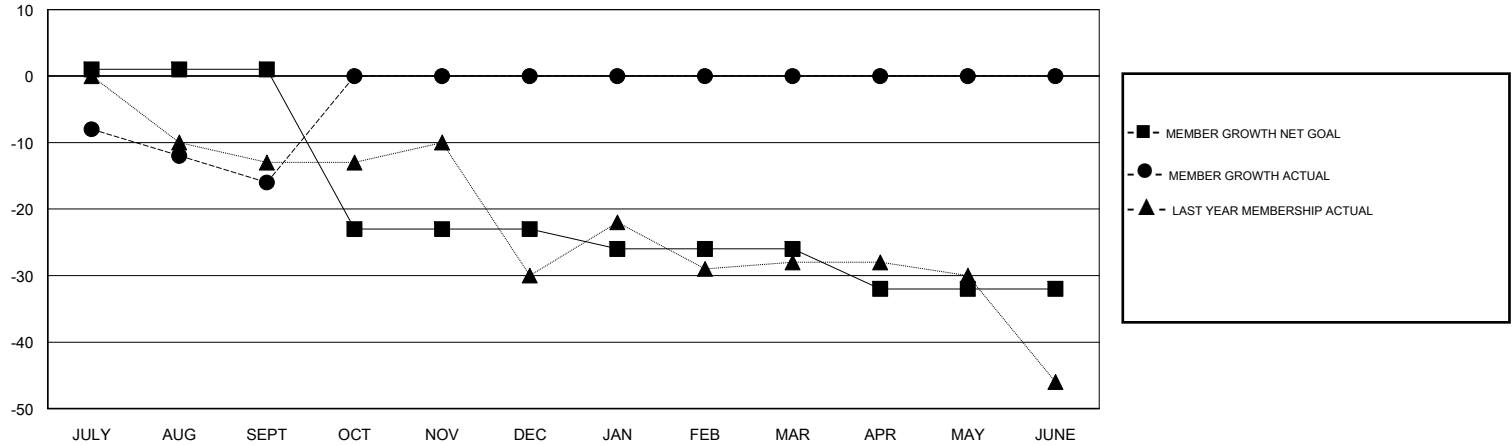
GMT CA

Clubs				Members			
RESULTS FOR 2017-2018				RESULTS FOR 2017-2018			
QUARTER	NEW CLUB GOAL	NEW CLUBS	DROPPED CLUBS	QUARTER	MEMBER GROWTH NET GOAL	MEMBER GROWTH ACTUAL	DROPPED MEMBERS ACTUAL (including transfers)
JULY/AUG/SEPT	0	0	0	JULY/AUG/SEPT	1	10	26
OCT/NOV/DEC	0	0	0	OCT/NOV/DEC	-24	0	0
JAN/FEB/MAR	0	0	0	JAN/FEB/MAR	-3	0	0
APR/MAY/JUNE	0	0	0	APR/MAY/JUNE	-6	0	0

GOALS AND ACTUAL NEW CLUBS CUMULATIVE



GOALS AND ACTUAL MEMBERS CUMULATIVE



DROPPED CLUBS: 0	6 CLUBS OF 37 ADDED 1 OR MORE NEW MEMBERS	<u>GENDER DISTRIBUTION</u> MALE 674 (69.06%) FEMALE 302 (30.94%) Women Percentage Fiscal Year Goal: 30%
<u>DROPPED MEMBERS</u> DECEASED 6 CLUB CANCELLED 0 OTHER 20 TOTAL 26	CLICK HERE FOR CUMULATIVE MEMBERSHIP DATA	TOTAL FAMILY UNIT MEMBERS 234 FAMILY MEMBERS PAYING HALF DUES 118